

MLC PROGRAM 30"

Mudline Casing Hanger

- ✓ Has External, Fielded removable Fluted load ring that lands on the 45° shoulder in 30° Conductor landing ring.
- ✓ Internal profile has 45° load shoulder for next mudline hanger.
- ✓ Bottom connection is customer – specified
- ✓ Top connection in one pitch modified Left-hand beveled square thread for Running/Tieback tool or latch/lock tieback tool.



CASING HANGER DATA				
Size	20"	13-3/8"	10-3/4"	7"
Service	H2S	H2S	H2S	H2S
Maximum OD	26.78"	15.50"	13.38"	9.24"
Minimum ID	17.6"	12.32"	9.33"	5.92"
Maximum Bit Size	17.5"	12.25"	9.875"	8.5"
Pressure Rating	1,500 Psi	5,000 Psi	11,300 Psi	10,000 Psi
CAPACITIES & FLOW BY				
	20"	13-3/8"	10-3/4"	7"
Running Capacity	2,260,000 LBS	1,170,000 LBS	2,146,000 LBS	870,000 LBS
Hanging Capacity	2,900,000 LBS	1,490,000 LBS	1,520,000 LBS	1,140,000 LBS
Flow By Running	32 in ²	20 in ²	11.9 in ²	4 in ²
Flow By Landed	12 in ²	16 in ²	15.4 in ²	7 in ²



Running Tools

- ✓ Has two-pitch modified left-hand beveled square thread pin down and customer – specified casing thread box up.
- ✓ Elastomer seals and wash ports for annulus washout.



RUNNING TOOL DATA				
Size	20"	13-3/8"	10-3/4"	7"
Service	STANDARD	H2S	H2S	H2S
Maximum OD	21.510"	14.76"	11.75"	7.8"
Minimum ID	18.720"	12.42"	9.33"	5.9"
Maximum Bit Size	17-1/2"	12.25"	9.5"	5-1/2"
Pressure Rating	1,500 PSI	5,000 Psi	10,000 Psi	10,000Psi
Axial Capacity	2,260,000 LBS	1,170,000LBS	870,000LBS	870,000LBS
Thread Type	LEFT HAND-1TPI	LEFT HAND-2TPI	LEFT HAND 2TPI	LEFT HAND 2TPI
Number Of Turns To Make-Up	30 TO 3-1/2"	8 TO 9	7 1/2" TO 8	7 TO 8
Recommended Make-Up Torque	1500-2500 FT-LBS	4000-6500 FT-LBS	2500-4000 FT-LBS	1500-2500 FT-LBS
Number Of Turns To Open Wash Ports	1 – 1/2"	3-1/2 TO 4	3-1/2" TO 4	3-1/2" TO 4

Tieback Tools

- ✓ Has three – pitch modified right-hand beveled square thread pin down & customer-specified casing thread box up.
- ✓ Metal-to-metal seal on nose of tool
- ✓ Seals between tieback tool and casing hanger ,with elastomer seals as backups.



TIEBACK TOOL DATA				
Size	20"	13-3/8"	10-3/4"	7"
Service	STANDARD	H2S	H2S	H2S
Maximum OD	21.510"	14.76"	11.75"	7.8"
Minimum ID	18.720"	12.42"	9.33"	5.9"
Maximum Bit Size	17-1/2"	12.25"	9.25"	5-1/2"
Pressure Rating	1,500 PSI	5,000 Psi	10,000 Psi	10,000 Psi
Axial Capacity	2,260,000 LBS	900,000LBS	840,000LBS	870,000LBS
Thread Type	LEFT HAND-1TPI	RIGHT HAND-3TPI	RIGHT HAND-3TPI	LEFT HAND 2TPI
Number Of Turns To Make-Up	30 TO 3-1/2"	9-1/2 TO 10-1/2	9 1/2" TO 10 1/2"	7 TO 8
Recommended Make-Up Torque	1500-2500 FT-LBS	2500-4000 FT-LBS	2500-4000 FT-LBS	1500-2500 FT-LBS
Number Of Turns To Open Wash Ports	1 – 1/2"	17-1/2"	8-1/2"	3-1/2" TO 4

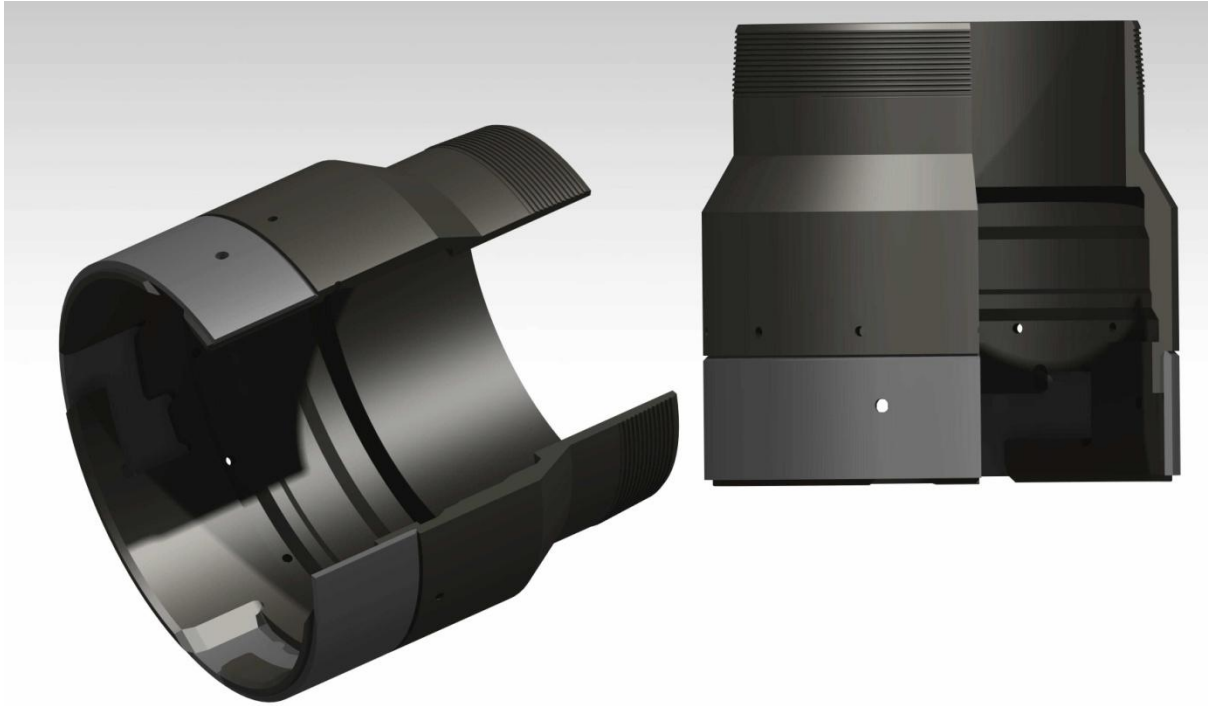
Corrosion Cap with Check Valve

- ✓ Check valve in stem of pressure containing corrosion cap prevents hydraulic hanger and relieves pressure buildup when recovering cap.
- ✓ Check valve is held open by stem in running tool.
- ✓ External two-pith modified left-hand beveled square threads on cap bottom engage running threads in mudline hanger.



CORROSION CAP TOOL DATA				
Size	20"	13-3/8"	10-3/4"	7"
Service	STANDARD	H2S	H2S	H2S
Maximum OD	21.23"	14.76"	11.25"	7.8"
Maximum Bit Size	17.5"	12.25"	9.5"	5-1/2"
Pressure Rating	N/A	N/A	10,000 Psi	10,000 Psi
Thread Type	LEFT HAND 2TPI	LEFT HAND 2TPI	LEFT HAND 2TPI	LEFT HAND 2TPI
Number Of Turns To Make-Up	7 TO 8	7 TO 8	7 TO 8	7 TO 8
Recommended Make-Up Torque	1500-2500 FT-LBS	1500-2500 FT-LBS	1500-2500 FT-LBS	1500-2500 FT-LBS

DMR 30" BOX



MECHANICAL SPECIFICATION DMR CONNECTOR	
Size	30"
Service	STANDARD
Maximum OD	34.36"
Minimum ID	28"
Wall Thickness	3.4"
Min. Yield String	95 KSI
O.A.L (Made Up)	28"
Release Torque	148-22 KIP/FT
Internal Yield Pressure	1590 PSI
Bending Yield Capacity	1240 KIP/FT
Tensile Yield	905 KIPS

DMR 30" R-PIN



MECHANICAL SPECIFICATION DMR CONNECTOR		
Size	30"	
Service	STANDARD	
Maximum OD	34.36"	
Minimum ID	28"	
Wall Thickness	3.4"	
Min. Yield String	95 KSI	
O.A.L (Made Up)	28"	
	Release Torque	18-22 KIP/FT
	Internal Yield Pressure	1590 PSI
DMR30" R-PIN	Bending Yield Capacity	1240 KIP/FT
	Tensile Yield	905 KIPS

DMR 30" T-PIN



MECHANICAL SPECIFICATION DMR CONNECTOR		
Size	30"	
Service	STANDARD	
Maximum OD	32.03"	
Minimum ID	27.55"	
Wall Thickness	2.24"	
Min. Yield String	95 KSI	
O.A.L (Made Up)	28"	
	Release Torque	18-22 KIP/FT

MLC PROGRAM 26''

Mudline Casing Hanger

- ✓ Has External, Fielded removable Fluted load ring that lands on the 45° shoulder in 26° Conductor landing ring.
- ✓ Internal profile has 45° load shoulder for Next mudline hanger.
- ✓ Bottom connection is customer – specified
- ✓ Top connection in one-pitch modified Left-hand beveled square thread for Running/Tieback tool or latch/lock tieback tool.



CASING HANGER Data				
Size	18-5/8"	13-3/8"	9-5/8"	7"
Service	H2S	H2S	H2S	H2S
Maximum OD	24.01"	15.50"	13.385"	9.24"
Minimum ID	16.35"	12.32"	8.58"	5.92"
Maximum Bit Size	16"	12.25	8-1/2"	8.5"
Pressure Rating	5,000 Psi	5,000 Psi	10,000 Psi	10,000 Psi
CAPACITIES & FLOW BY				
	18-5/8"	13-3/8"	9-5/8"	7"
Running Capacity	8,750.000 LBS	1,170.000LBS	870,000LBS	870,000 LBS
Hanging Capacity	8,750.000 LBS	1,490.000LBS	1,140.000LBS	1,140,000 LBS
Flow by Running	32 in ²	20 in ²	4 in ²	4 in ²
Flow by Landed	32 in ²	16 in ²	7 in ²	7 in ²



Running Tools

- ✓ Has two-pitch modified left-hand beveled square thread pin down and customer – specified casing thread box up.
- ✓ Elastomer seals and wash ports for annulus washout.



RUNNING TOOL DATA				
Size	18-5/8"	13-3/8"	9-5/8"	7"
Service	STANDARD	H2S	H2S	H2S
Maximum OD	20.65"	14.76"	11.26"	7.8"
Minimum ID	17.563"	12.42"	8.582"	5.9"
Maximum Bit Size	17-1/2"	12.25"	8-1/2"	5-1/2"
Pressure Rating	5,000 Psi	5,000 Psi	10,000 Psi	10,000 Psi
Axial Capacity	8,750,000 LBS	1,170,000 LBS	870,000LBS	870,000LBS
Thread Type	LEFT HAND-1TPI	LEFT HAND-2TPI	LEFT HAND-2TPI	LEFT HAND 2TPI
Number Of Turns To Make-Up	30 TO 3-1/2"	8 TO 9	7 TO 8	7 TO 8
Recommended Make-Up Torque	1500-3000 FT-LBS	4000-6500 FT-LBS	1500-2500 FT-LBS	1500-2500 FT-LBS
Number Of Turns To Open Wash Ports	1 – 1/2" TO 1-1/4"	3-1/2 TO 4	3-1/2 TO 4	3-1/2" TO 4

Tieback Tools

- ✓ Has three – pitch modified right-hand beveled square thread pin down and Customer-specified casing thread box up.
- ✓ Metal-to-metal seal on nose of tool
- ✓ Seals between tieback tool and casing hanger, with elastomer seals



TIEBACK TOOL DATA				
Size	18-5/8"	13-3/8"	9-5/8"	7"
Service	STANDARD	H2S	H2S	H2S
Maximum OD	20.65"	14.72"	11.26"	7.8"
Minimum ID	17.563"	12.42"	8.582"	5.9"
Maximum Bit Size	17-1/2"	12.25"	8-1/2"	5-1/2"
Pressure Rating	5,000 Psi	5,000 Psi	10,000 Psi	10,000 Psi
Axial Capacity	8,750,000 LBS	900,000LBS	870,000LBS	870,000LBS
Thread Type	LEFT HAND-1TPI	RIGHT HAND-3TPI	LEFT HAND-2TPI	LEFT HAND 2TPI
Number Of Turns To Make-Up	30 TO 3-1/2"	9 1/2" TO 10 1/2"	7 TO 8	7 TO 8
Recommended Make-Up Torque	1500-3000 FT-LBS	2500-4000 FT-LBS	1500-2500 FT-LBS	1500-2500 FT-LBS

Corrosion Cap with Check Valve

- ✓ Check valve in stem of pressure containing corrosion cap prevents hydraulic hanger and relieves pressure buildup when recovering cap.
- ✓ Check valve is held open by stem in running tool.
- ✓ External two-pith modified left-hand beveled square threads on cap bottom engage running threads in mudline hanger.



CORROSION CAP TOOL DATA				
Size	18-5/8"	13-3/8"	9-5/8"	7"
Service	STANDARD	H2S	H2S	H2S
Maximum OD	19.85"	14.76"	11.26"	7.8"
Maximum Bit Size	17-1/2"	12.25"	8-1/2"	5-1/2"
Pressure Rating	5,000 Psi	N/A	10,000 Psi	10,000 Psi
Thread Type	LEFT HAND 1TPI	LEFT HAND 2TPI	LEFT HAND 2TPI	LEFT HAND 2TPI
Number Of Turns To Make-Up	7 TO 8	7 TO 8	7 TO 8	7 TO 8
Recommended Make-Up Torque	1500-2500 FT-LBS	1500-2500 FT-LBS	1500-2500 FT-LBS	1500-2500 FT-LBS

DMR 26" BOX



MECHANICAL SPECIFICATION DMR CONNECTOR	
Size	26"
Service	STANDARD
Maximum OD	30.11"
Minimum ID	25.35"
Wall Thickness	2.38"
Min. Yield String	95 KSI
O.A.L (Made Up)	24"
Release Torque	18-22 KIP/FT
Internal Yield Pressure	1590 PSI
Bending Yield Capacity	1240 KIP/FT
Tensile Yield	905 KIPS

DMR 26" R-PIN



MECHANICAL SPECIFICATION DMR CONNECTOR		
Size	26"	
Service	STANDARD	
Maximum OD	27.35"	
Minimum ID	24.29"	
Wall Thickness	1.53"	
Min. Yield String	95 KSI	
O.A.L (Made Up)	24"	
	Release Torque	18-22 KIP/FT
	Internal Yield Pressure	1590 PSI
DMR 26" R-PIN	Bending Yield Capacity	1240 KIP/FT
	Tensile Yield	905 KIPS

DMR 26" T-PIN



MECHANICAL SPECIFICATION DMR CONNECTOR		
Size	26"	
Service	STANDARD	
Maximum OD	27.44"	
Minimum ID	24.29"	
Wall Thickness	1.57"	
Min.Yield String	95 KSI	
O.A.L (Made Up)	24"	
	Release Torque	18-22 KIP/FT

J-SLOT Running Tool

- ✓ Drill pipe "Overe shot " configuration with drill pipe box up and j-slot cylindrical bottom.
- ✓ Internal j-slot engage drive pins on corrosion cap with right-hand rotation.
- ✓ Elastomer seals provide effective seal between running tool and corrosion cap stem when tool is stabbed over mandrel.

